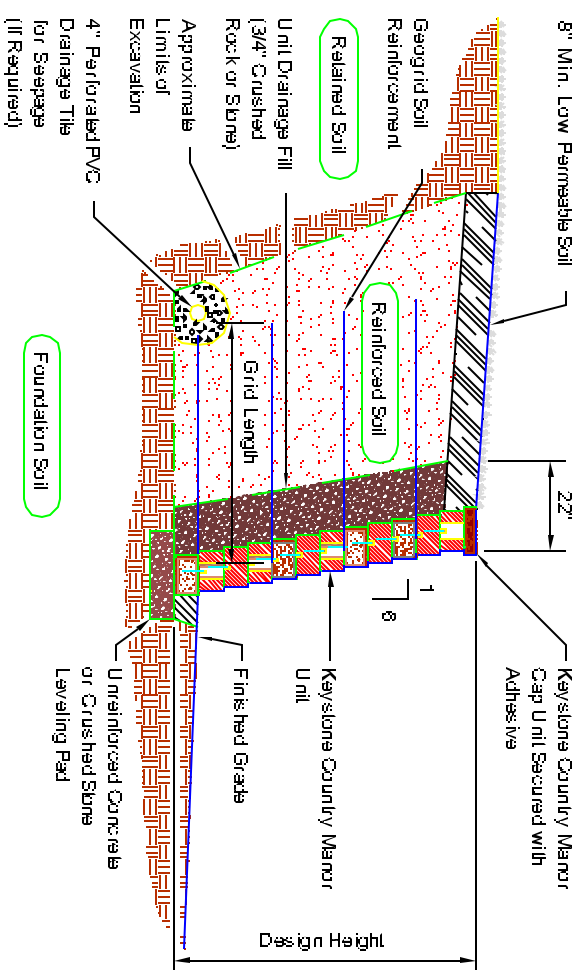
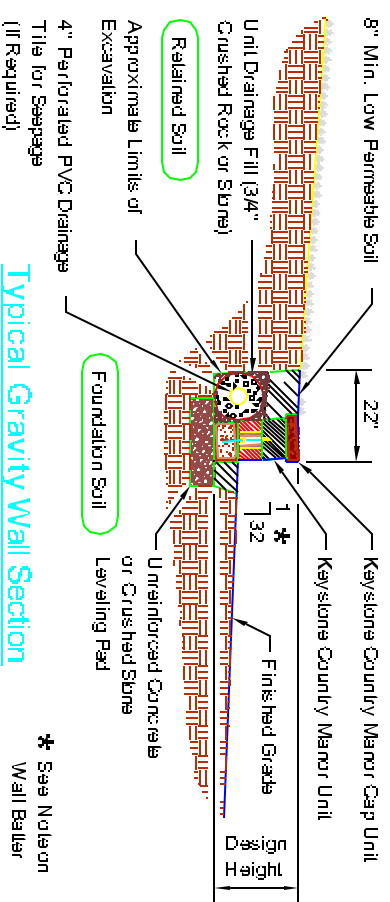


**\* Note:**  
Center pin hole walls shall be constructed with positive batter by filling units back towards fill on leveling pad.

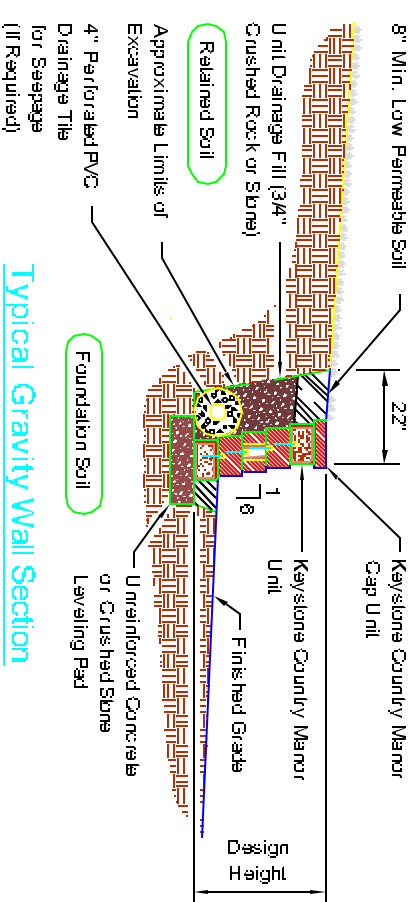
**Typical Reinforced Wall Section**  
County Manor Unit - Near Vertical Salsback



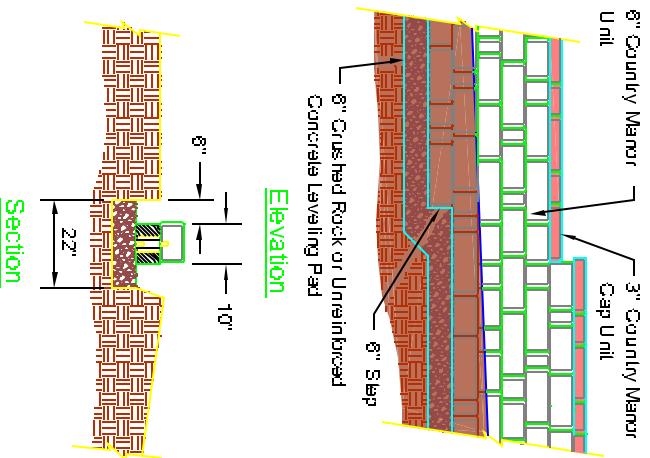
**Typical Reinforced Wall Section**  
County Manor Unit - T\" Salsback



**Typical Gravity Wall Section**  
County Manor Unit - Near Vertical Salsback



**Typical Gravity Wall Section**  
County Manor Unit - T\" Salsback

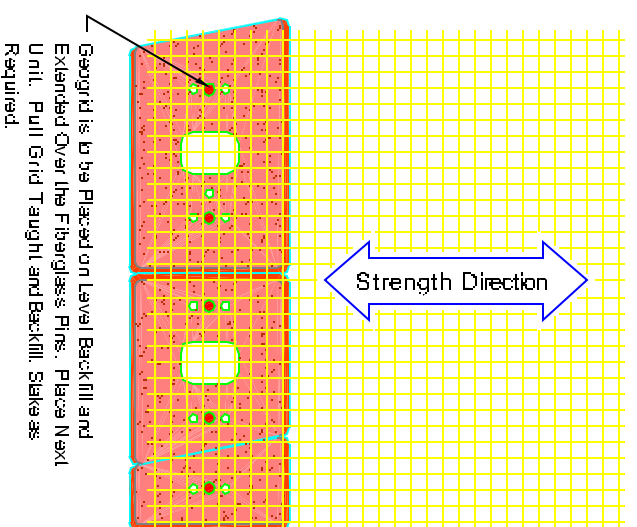


**Leveling Pad and Cap Step Detail**

Copyright: 2002, Keystone Recycled Wallpapers.

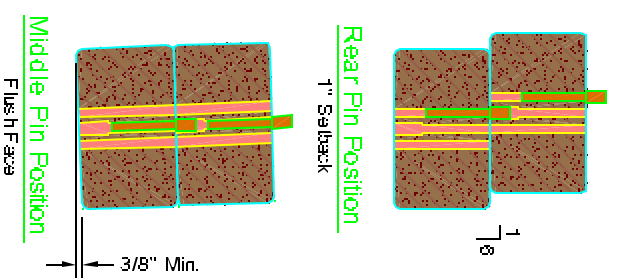
Keystone is the internal stability of the KEVSTONE wall structure, and stability, including but not limited to, manufacturer and design liability, responsibility of the customer. The customer is liable for the construction of the wall with the recycled paper products of contractor, including but not limited to, KEVSTONE's specifications or drawings.

This drawing is being furnished for the specific project. Any use, application, or modification of this drawing without the prior written approval of Keystone Recycled Wall Systems is prohibited.

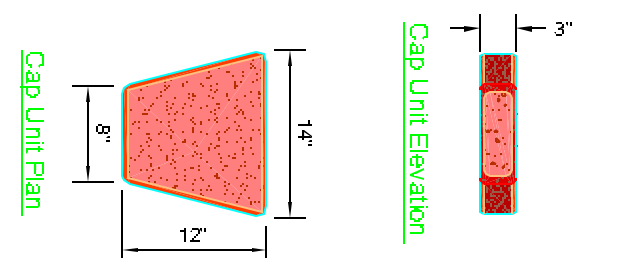


**Grid & Pin Connection**

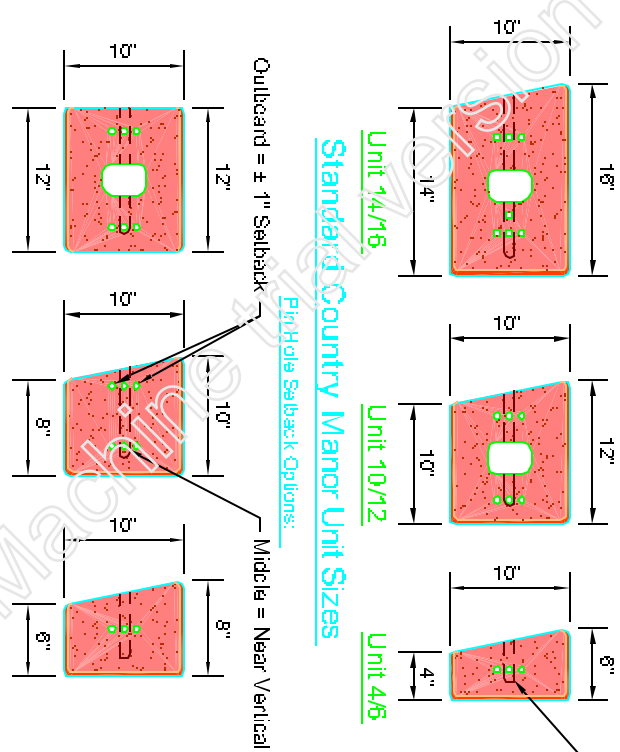
No.	Date	Revised	By



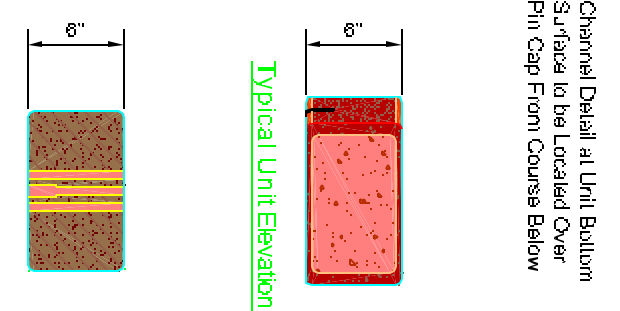
**Fiberglass Pin Alignment and Interconnection**



**Country Manor Cap Unit**



**Standard Country Manor Unit Sizes**



**Typical Unit Elevation**

**Typical X-Section**

Dimensions May Vary by Region. All Dimensions are Nominal. All Units Not Available in All Locations.



Scale	Project	Date	Project No.
No Scale	Country Manor System	07/29/02	1 of 1